

# Property Package Fixed Price - Full Turnkey

**Breezewood Estate**

0 New Road Fernvale QLD 4306



## \$720,480

Breezewood Estate, located in the thriving community of Fernvale, Queensland. Key Highlights:  
A carefully planned community with spacious homesites ranging from 600m<sup>2</sup> and above.  
Just minutes from local shopping, schools, cafes, parks, and medical services  
Easy access to the Warrego Highway  
High-growth area with strong rental demand and infrastructure investment  
With limited land supply and growing interest in the region, Breezewood Estate presents a strategic opportunity for both homeowners and investors.

LAND PRICE \$345,000	LAND SIZE M <sup>2</sup> 600.0
BUILD PRICE \$375,480	BUILD SIZE M <sup>2</sup> 179.0
LAND REGISTRATION Dec-25	EST. RENTAL RETURN P/W \$653



DARREL HIGGINS  
0416093815  
darrel@higginsco.com.au

# FLOOR PLAN

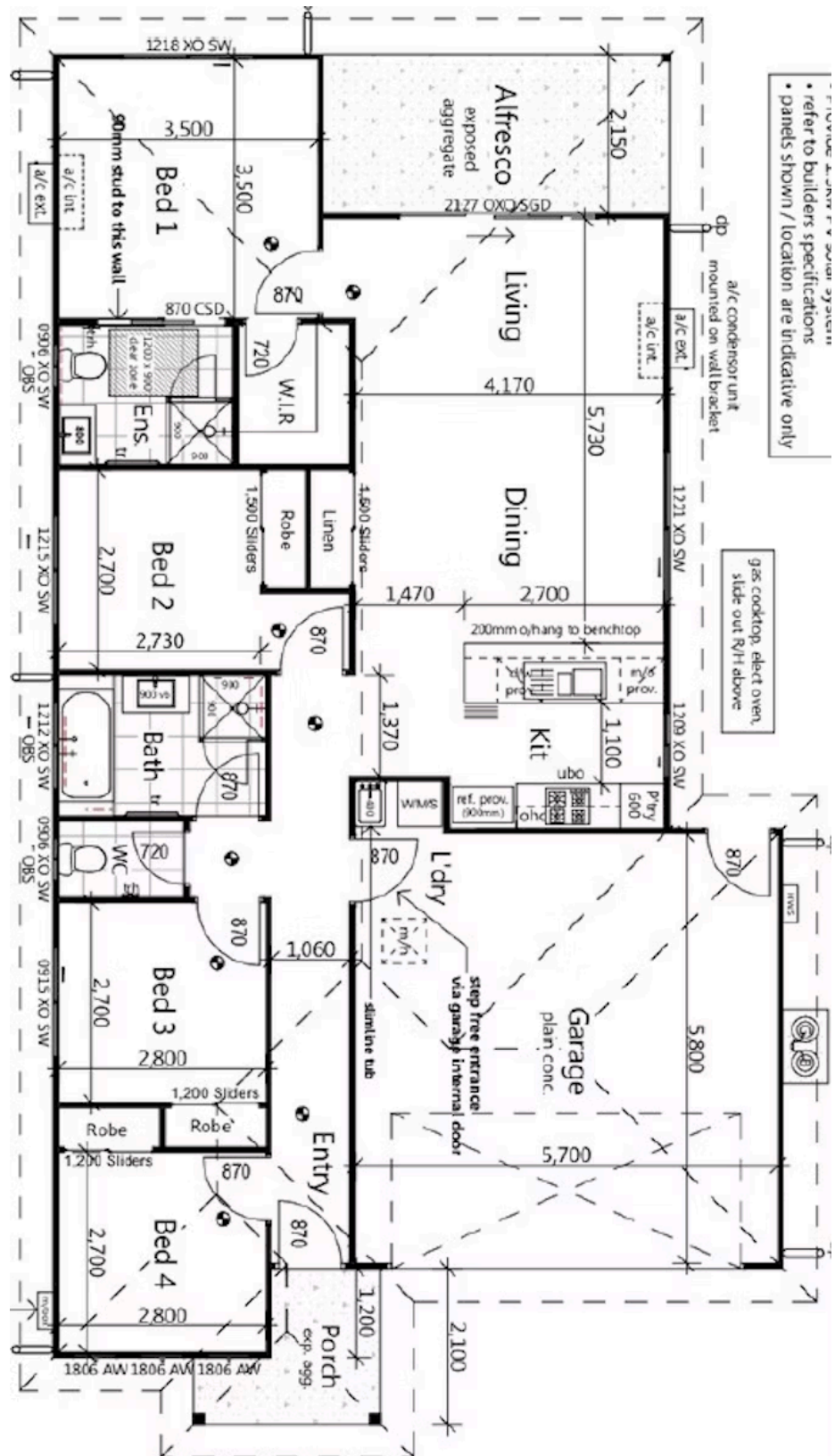
## SINGLE DWELLING

Total Area 179.0 m<sup>2</sup>



### PACKAGE HIGHLIGHTS

- Building Application to include full approval to build your home.
- Fixed price building contract
- 7 Star Energy Rating
- 6.5 years structural builders warranty
- 12 month maintenance period
- Ceiling height 2440mm
- Ceiling insulation and wall sisalation as per energy efficiency report
- Walk in robe to master, hanging rail and top shelf, 1 x bank of 3 shelves
- Stone benchtops 20mm
- 1 to 1 1/2 bowl stainless steel sink design and space dependant
- Quality stainless steel appliances
- Beko 600mm dishwasher
- Beko 600mm oven
- Beko 600mm cooktop
- Stone benchtops 20mm in bathroom



Floorplan, facade, and all measurements are approximate and subject to change. Images, colors, and dimensions are for illustration only and may differ from final product. Prices shown are examples and may change without notice. Additional fees may apply. Lot widths may vary based on estate requirements and council guidelines. Contact your sales consultant for complete terms and conditions.