

Property Package Full Turnkey

Chisholm - McFarlanes Rise

Lot 238 Minya Street Chisholm NSW 2322



\$1,163,588

Watch your family grow and thrive within the tranquil surrounds of McFarlanes Rise, a much-anticipated and limited land release within the close-knit community of rapidly transforming Chisholm. Design the home you've always dreamed of, enjoy a feeling of belonging and experience a friendly neighbourhood vibe, all within easy reach of Maitland and the thriving city of Newcastle.

LAND PRICE \$533,000	LAND SIZE M ² 613.0
BUILD PRICE \$630,588	BUILD SIZE M ² 142.5
LAND REGISTRATION November 2025	EST. RENTAL RETURN P/W \$1050/\$1100



DARREL HIGGINS
0416093815
darrel@higginsco.com.au

FLOOR PLAN

DUAL DWELLING HOUSE

Total Area 142.5 m²



3+2



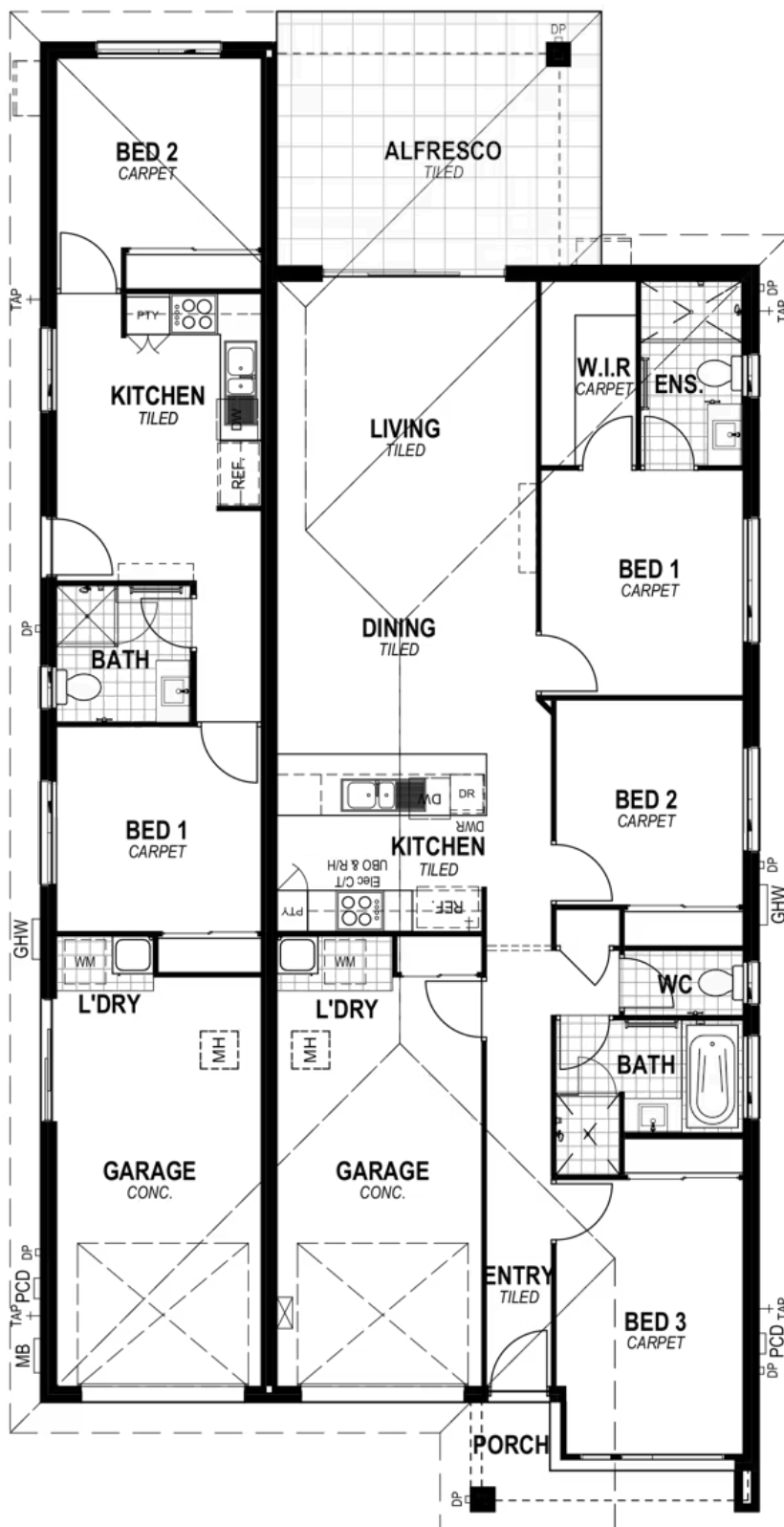
2+1



1+1

PACKAGE HIGHLIGHTS

- Full Turnkey finish
- Fully fenced, turfed & landscaped
- Colorbond roof
- 2550mm high ceilings
- 600mm Stainless steel kitchen appliances
- 20mm manufactured stone kitchen benchtop
- Reverse cycle/split system air-conditioner in living and main bedroom
- Approximately 1.8kw solar power system
- Cold water to fridge space
- Roller blinds throughout (exc wet rooms)
- Ceiling fans to bedrooms
- Undercover tiled alfresco area



TUVALU

Floorplan, facade, and all measurements are approximate and subject to change. Images, colors, and dimensions are for illustration only and may differ from final product. Prices shown are examples and may change without notice. Additional fees may apply. Lot widths may vary based on estate requirements and council guidelines. Contact your sales consultant for complete terms and conditions.